

# Environmental Services & Support

## Company Profile



**February 2021**





## **Introducing ESS**

Environmental Services & Support (ESS) is a registered consultancy firm, established in Suriname in 2005<sup>1</sup>. For public and private sector clients, we (ESS) implement multidisciplinary projects that require 'green' as well as 'grey' environmental expertise. We combine expertise that is available in Suriname and globally, and we put it to work.

We implement studies and help develop policies, plans and projects in relation to the use and conservation of biological resources, including forestry and ecotourism. We assess and monitor the environmental and social impacts of agriculture, mining, infrastructure and other projects. We also advise on the valuation of forest resources and certification of their sustainable use.

In addition, we design and implement customized training modules and short courses, and we offer support for the publication of information on ecology and environment. We also assist organizations in designing and managing projects, fundraising and recruiting staff.



## **Mission and Approach**

Based on our expertise in relation to forests, nature and environment, we provide clients in a timely manner with useful research results and advice. We support them to be successful in achieving their goals, within the context of responsible (business) development in natural and human-made environments. We are very much committed to providing services and support that meet or exceed international professional standards.

ESS works by using its network to mobilize the local and international experts required for the job. Whenever possible, ESS involves local students in the implementation of its projects, giving them the chance to acquire knowledge and skills.

At present, the geographical focus of ESS is Suriname and the Guianas in general.

<sup>1</sup> Registered as "Environmental Services and Support N.V." at the Suriname Chamber of Commerce and Industry (KKF); registration no. 42861



## Scope

Currently, the main scope of activities of ESS are:

### **SUSTAINABLE FOREST MANAGEMENT AND CERTIFICATION**

In forest management and timber harvesting, wise use and sustainability have become of critical importance. Certification is the means to achieve sustainability and to communicate sustainable land and production management with the market and the public. ESS helps companies with feasibility studies, management plans, and with sustainable forest management and obtaining 'green' certification.

### **BASELINE, ENVIRONMENTAL IMPACT AND MONITORING STUDIES**

Development projects require that the baseline situation before the project starts is assessed, and that impact on the natural and social environment is predicted and monitored. Environmental and social costs versus benefits must be known. Knowledge is needed on measures to reduce adverse impacts and enhance beneficial ones. ESS implements baseline and impact assessment studies in relation to e.g. mining, energy, agriculture, forestry, and transport development projects.

### **VALUATION OF INTANGIBLE RESOURCES**

Natural areas are often defined by intangibles with uncertain market value, such as clean water, fresh air, carbon sequestration and diversity of life. Such intangibles can be experienced directly by visitors, and this is the basis of nature tourism and a key aspect of ecotourism. ESS advises on how to conserve such intangibles and transform them into tangible revenues, such as by means of tourism (e.g. ecotourism), with due consideration of cultural sensitivities.

### **TRAINING, EXTENSION AND PUBLICATION**

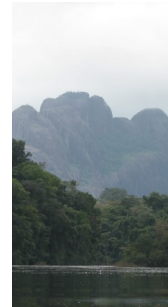
Performance and results depend on well trained people, equipped to their task. Training and extension help to stay informed concerning developments in various fields. ESS offers help with tailor-made design and the organizing of training and extension meetings, at least in the context of the forest and environmental sectors. ESS also contributes to education and awareness through publication of information related to ecology and the environment in collaboration with other organizations.

### **PLAN, POLICY AND PROJECT DEVELOPMENT**

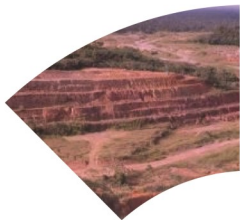
Suggestions and ideas, even global initiatives in the forest and environmental sectors need to be translated in realistic policies and well documented plans at a manageable scale. This is true for businesses as well as governments. ESS offers its support for policy, plan and project development.

### **PROJECT MANAGEMENT, FUNDRAISING, AND RECRUITMENT**

Within the forest and environmental sectors context, ESS can assume the responsibility of project manager on behalf of its clients. It also offers support to identify and approach funds and donors, and to recruit experienced staff and trainees.

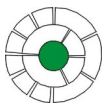






## **Organization**

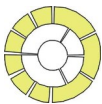
ESS is organized as a core with two surrounding layers:



**CORE** – the administrative and logistical management is the responsibility of Ms. Cashmiërra Kartodikromo; Mr. Bart De Dyn is the Director / CEO.



**INNER LAYER** – associates of ESS which do all commercial work via ESS; these currently are: Bart De Dyn, Chantal Landburg, Sietze van Dijk and Cashmiërra Kartodikromo.



**OUTER LAYER** – local and international consultants, either companies or individual experts, who are contracted for specific jobs, based on the client's requirements.

Over the years, ESS has established partnerships with national and international experts and companies to tackle more complex jobs in Suriname and the region.





## Expertise

We can offer the expertise of companies and experts associated with ESS (cf. Inner Layer), and more (cf. Outer Layer).



### INNER LAYER – ASSOCIATES

These experts work exclusively via ESS in the Guianas:

**BART DE DYN**, Licentiaat (MSc equivalent) in Biology from the University of Gent in Belgium, with 27+ years of experience in nature conservation and ecological baseline and impact assessment, mainly in Suriname;

**CHANTAL LANDBURG**, Master of Science (MSc) in Sustainable Management of Natural Resources from the Anton de Kom University of Suriname, with 12+ years of experience in project management, soil, water and ecological (field) studies in Suriname;

**SIETZE VAN DIJK**, Master of Science (MSc) in Tropical Forest Ecology from the University of Wageningen (NL), specialized in sustainable forest management and certification, and related capacity building and institutional support, with 37+ years of experience worldwide (of which 20+ years in Suriname);

**CASHMIËRA KARTODIKROMO**, Bachelor of Science (BSc) in Environmental Science - orientation Management from the Anton de Kom University of Suriname, and is trained in Forestry at the Institute for Natural Resources and Engineering studies - (NATIN-MBO); and



### OUTER LAYER – ADDITIONAL COMPANIES AND EXPERTS

These are descriptions of additional companies / experts that ESS can easily mobilize:

**TOURISM SPECIALIST**, Master in Leisure, Tourism and Environment from the Wageningen University in The Netherlands, chairman of a foundation for conservation and sustainable tourism, with 30+ years of experience in nature tourism and capacity building in Suriname;

**BOTANIST**, Doctor in Botany from the Museum National d'Histoire Naturelle in Paris, France, with 15+ years of worldwide experience, including in French Guiana and Suriname, in assessment and conservation of flora, vegetation and biodiversity in general;

**ORNITHOLOGIST**, Doctor in Biology from the Louisiana State University in the USA, specialized in neotropical birds, with 10+ years of experience in faunal surveys, and impact assessment studies in the Americas, including Suriname and Guyana;

**MAMMAL SPECIALIST**, Doctor in Biology from the University of Toronto in Canada, specialized in small mammals, with 25+ years of worldwide experience in faunal surveys, impact assessment studies and field training, including in the Guianas;

**HERPETOLOGIST**, Doctor in Biology from the University of Leiden in The Netherlands; specialized in reptiles and amphibians of the Guianas, with 30+ years of experience in surveys, impact assessment studies and field training, mostly in the Guianas;

**FISH SPECIALIST**, Doctor in Biology from the University of Suriname, specialized in the ecology of the fishes of the Guiana, with 25+ years of experience in surveys and impact assessment studies in the Guianas; and

**SOCIAL STUDIES FIRM**, Suriname based consultancy firm headed by two anthropologists. The firm conducts quantitative and qualitative social science research, primarily in the areas of rural development, public health, mining, and education.

**We can mobilize**



**an even wider  
range of expertise**



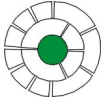
**if the job  
requires it.**







## **Contact**



Feel free to contact us via our Junior Consultant

Ms. Cashmiërra Kartodikromo

Email: [officemanagement@ess-environment.com](mailto:officemanagement@ess-environment.com)

Phone: (597) 8187815/ (597) 8559282

P.O. Box 2240 Paramaribo, Suriname

Website: [www.ess-environment.com](http://www.ess-environment.com)

Visit our Facebook and LinkedIn pages by clicking on the icons below







## Our track record

ESS has been assigned the jobs listed below, either as lead or as subcontractor within the framework of a larger commission. What is listed below is a selection of the jobs we (ESS) have implemented over the past years; the complete list can be found on our website.

ASSIGNMENT	PERIOD	CLIENT
<b>Sustainable Forest Management and Certification</b>		
• Environmental Issues related to Industrial Charcoal Making in Suriname	2018 - 2019	Foundation For Sustainable Wood Processing in Suriname (FSWPS)
• Multi-perspective analysis of drivers of deforestation, forest degradation and barriers to REDD+ activities in Suriname	2016 - 2017	UNIQUE forestry and land use GmbH (Germany)
• Value Chain Analysis for the Domestic Furniture Industry in Suriname	2015 - 2016	Center for Promotion of Import from Developing Countries (CBI, The Netherlands)
• Support FSC Controlled Wood certification of forest operations & processing facilities	2014 - 2015	Troloco Holding NV (Suriname)
• Development of business, management and Operational Plans for Concessionaires	2005 - 2010	Eversur- & Tropical Timber Company, Mr. Overeem (Suriname)
<b>Baseline, Environmental Impact, and Monitoring Studies</b>		
• Environmental Impact Assessment for the "Submarine Fiber Cable Project" of Digicel Suriname	2021 - ongoing	Digicel Suriname
• Assessment of revegetation success in industrial gold mine	2017 - 2018	IAMGold Rosebel Gold Mines (Suriname)
• Terrestrial and Aquatic Baseline Study in relation to Saramacca Gold Mine Expansion Project (Suriname)	2017 - 2019	IAMGold Rosebel Gold Mines (Suriname)
• Terrestrial and Aquatic Baseline Study in relation to Sabajo Gold Mine Expansion Project (Suriname)	2017 - ongoing	Newmont Goldcorp Suriname
• Determination of Target Values for Revegetation related to closure of bauxite mines in Suriname	2013 - 2015	SRK (USA) for Suralco (subsidiary of ALCOA)
• Scoping study for Environmental Impact Assessment Pokigron - Pusugrunu road (Suriname)	2010	PROSUR (Suriname) for Suriname Government



ASSIGNMENT	PERIOD	CLIENT
<b>Valuation of Intangible Resources</b>		
• Assessment of Business Baseline and Exploration of Business Options for Galibi Nature Reserve and Brownsberg Nature Park	2015	World Wildlife Fund Guianas (WWF Guianas)
• Development of a Business plan for the Central Suriname Nature Reserve (CSNR)	2010	Ministry of Physical Planning, Land and Forest Management (RGB)
<b>Training, Extension and Publication</b>		
• Training of community members for the participatory water quality monitoring program of NEWMONT Suriname.	2018	Newmont Goldcorp Suriname
• Water quality field training, procedure development, data management and analysis for environmental monitoring	2015-ongoing	Surgold LLC, later Newmont Suriname, and now Newmont Goldcorp Suriname
• Production of a book about Suriname's Natural History and Ecology	2015 - 2018	World Wildlife Fund Guianas (WWF Guianas)
• Management and editing of Quarterly Specialist Journal (Vakblad BOS & NATUUR)	2009 - 2012	Centre Agricultural Research Suriname (CELOS), WWF Guianas & Tropenbos Suriname
• Transfer of knowledge and development of expertise of junior employees in the forest and nature sector	2005 - 2011	PHS (Loggers' Platform in Suriname)
<b>Plan, Policy and Project Development</b>		
• Formulating an Environmental and Social Management Framework for the Ministry of Trade and Tourism	2018	World Bank
• Capacity Assessment of the Nature Conservation Division to Define Strengths and Weaknesses and Develop a Plan for Capacity Building	2016 - 2017	Conservation International Suriname (CI-S)
• Preparation of PIF and PPG documents for the Coastal Protected Area Management project in Suriname	2009	Government of Suriname (Ministry of RGB)
• Development of the National Biodiversity Action Plan 2012-2016	2007 - 2012	Government of Suriname (NIMOS & Ministry of ATM)



ASSIGNMENT	PERIOD	CLIENT
<b>Project Management, Fundraising and Recruitment</b>		
• Country representative in Suriname for promotion of twin-retort kiln technology to produce charcoal from industrial wood waste	2015	Charbon Engineering (The Netherlands)
• Evaluation of finalized projects funded by Small Grants Programme Suriname	2015 - 2016	Small Grants Programme Suriname
• Country representative in Suriname for the (FSC) sustainable timber programme	2014 - 2015	Sustainable Trade Initiative (IDH, The Netherlands )
• Management and editing of Quarterly Specialist Journal (Vakblad BOS & NATU-UR)	2009 - 2012	Centre Agricultural Research Suriname (CELOS), WWF Guianas & Tropenbos International (TBI) Suriname

