



Forests, Biodiversity, People and more

Company Profile





Introducing ESS

Environmental Services & Support N.V. (ESS) is a registered consultancy firm, established in Suriname in 2005¹. For public and private sector clients, we (ESS) implement multidisciplinary projects that require 'green' and 'grey' environmental expertise, as well as expertise in the 'social' domain. We are strong on local content and adhere to high quality standards, plus we combine senior and junior expertise, local and global, and put it to work.

We implement studies and help develop policies, plans and projects in relation to the use and conservation of biological resources, including forestry and ecotourism. We assess and monitor the environmental and social impacts of agriculture, mining, infrastructure and other projects. We engage stakeholders and take FPIC into account. We also advise on the valuation of forest resources, and certification of their sustainable use.

In addition, we design and implement customized training modules and short courses, and we offer support for the publication of information on ecology and environment. We also assist organizations in designing and managing projects, fundraising and recruiting staff.



Mission and Approach

Based on our expertise in relation to forests, nature and environment, as well as our understanding of the social context, we provide clients in a timely manner with the deliverables they need. We support our clients to be successful in achieving their goals, within the context of responsible business and socio-economic development in natural and human-made environments. We are very much committed to providing tailor-made services that meet or exceed international professional standards.

ESS works by using its extensive network to mobilize the local and international experts required for the job. Whenever possible, ESS involves local students or junior graduates in the implementation of its projects, giving them the chance to acquire knowledge and skills.

At present, the geographical focus of ESS is Suriname and the Guianas in general.

¹ Registered as "Environmental Services and Support N.V." at the Suriname Chamber of Commerce and Industry (KKF), reference no. 42861; Tax registration FIN no: 2000008607



Scope

Currently, the main scope of activities of ESS is:

BASELINE, ENVIRONMENTAL IMPACT AND MONITORING STUDIES

Development projects require that the baseline situation before the project starts is assessed, and that impact on the biophysical and social environment is predicted and monitored, and environmental costs versus benefits are known. Knowledge is needed as to measures to reduce adverse impacts and enhance beneficial ones. ESS implements baseline, impact assessment and monitoring studies in relation to e.g. mining, energy, agriculture, forestry and transport development projects.

SUSTAINABLE FOREST MANAGEMENT AND CERTIFICATION

In forest management and timber harvesting, wise use and sustainability have become of critical importance. Certification is the means to achieve sustainability and to communicate sustainable land and production management with the market and the public. ESS helps companies, communities and associations with feasibility studies, management plans, sustainable forest management, and obtaining 'green' certification.

VALUATION OF INTANGIBLE RESOURCES

Natural areas are often defined by intangibles with uncertain market value, such as clean water, fresh air, carbon sequestration and diversity of life. Such intangibles can be experienced directly by visitors, and this is the basis of nature tourism and ecotourism. ESS advises on how to conserve such intangibles and transform them into tangible revenues, such as by means of tourism and carbon valuation, with due consideration of cultural sensitivities and practices.

TRAINING, EXTENSION AND PUBLICATION

Performance and results depend on well-trained people, equipped to their task. Training and extension help to stay informed concerning developments in various fields. ESS offers help with tailor-made design and the organizing of training and extension meetings, such as on forestry and environmental management (ESIA and ESMP). ESS also contributes to education and awareness through publication of information related to ecology and the environment, in collaboration with other organizations.

PLAN, POLICY AND PROJECT DEVELOPMENT

Suggestions and ideas, even global initiatives in the forest and environmental sectors need to be translated in realistic policies and well documented plans at a manageable scale. This is true for businesses as well as governments. ESS offers its support for policy, plan and project development.

PROJECT MANAGEMENT, FUNDRAISING, AND RECRUITMENT

Within the forest and environmental sectors context, ESS can assume the responsibility of project manager on behalf of its clients. It also offers support to identify and approach funds and donors, and to recruit experienced staff and trainees.





We include the social dimension

Stakeholder engagement, such as in the context of ESIA and FPIC and other participatory approaches to development initiatives, are increasingly part of our focus, as are targeted socio-economic studies.

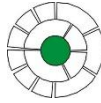
Baseline studies, Environmental and Social Impact Assessments (ESIA), and Environmental and Social Management Plans (ESMP) require stakeholder engagement and often also social baseline studies, as well as the development of specific social plans or tools. ESS mobilizes the expertise to tackle this. ESS' core team takes care of stakeholder engagement, if needed with additional support from other experts in our local network to help engage specific segments of Suriname's diverse society. We source or generate socio-economic data, and e.g. report on the social context and impacts of development projects.





Organization

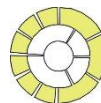
ESS is organized as a core with two surrounding layers:



CORE – Ms. Chantal Landburg is the General Director / CEO; The administrative and logistical management is the responsibility of Ms. Jessica Ritfeld.



INNER LAYER – associates of ESS which do all their commercial work via ESS; these currently include: Mrs. Angela Kromodimedjo-Soetotaroeno, Mr. Bart De Dyn, Mr. Hans Paters, Ms. Humaira Asruf, Mr. Raoul Boedhoe and Ms. Saskia Somai; in addition, Mr. Sietze van Dijk mostly advises, but also does some commercial work via ESS.



OUTER LAYER – local and international consultants, either companies or individual experts, who are contracted for specific jobs, based on the client's requirements.

Over the years, ESS has established partnerships with national and international experts and companies to tackle more complex jobs in Suriname and the region.



Chantal



Jessica



Bart



Hans



Humaira



Raoul



Saskia



Sietze



Expertise

We can offer the expertise of companies and experts associated with ESS (cf. Core and Inner Layer), and more (cf. Outer Layer).



CORE & INNER LAYER – ASSOCIATES

These experts work exclusively via ESS in the Guianas:

CHANTAL LANDBURG, Masters of Science (MSc) in Sustainable Management of Natural Resources and Bachelors of Science (BSc) in Environmental Management, both from the Anton de Kom University of Suriname, with 17+ years of experience in the field of environment, biodiversity, climate change, project cycles, agriculture and ecosystem-based adaptation in Suriname and other CARICOM countries;

JESSICA RITFELD, has 12+ years of experience in administrative, financial, and Human Resource administration. She has extensive experience in office management (back and front), executive support, and optimizing administrative and financial processes.



ANGELA KROMODIMEDJO-SOETOTAROENO, Master of Science (MSc) in Sustainable Development, with experience in environmental -governance, -monitoring, -legislation and -international conventions, and sustainable forestry (e.g. multi-stakeholder processes, conservation and sustainable resource management, policy development and institutional strengthening);

BART DE DYN, Licentiaat (MSc equivalent) in Biology from the University of Gent in Belgium, with 29+ years of experience in nature conservation and ecological baseline and impact assessment, mainly in Suriname;

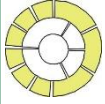
HANS PATERS, Master of Science (MSc) in Tropical Land Use from the University of Wageningen (NL), specialized in water management and rural development (multi-/interdisciplinary research and approaches) with 15+ years of experience in water and environmental management, mainly in the Netherlands;

HUMAIRA ASRUF, Bachelor of Science (BSc) in Biology from the Anton de Kom University of Suriname, with experience in management assistance, baseline and biodiversity studies;

RAOUL BOEDHOE, Master of Science (MSc) in Sustainable Management of Natural Resources from the Anton de Kom University of Suriname with experience in biodiversity baseline studies (mammals, herps and flora) as well as environmental, biodiversity and agricultural training programs;

SASKIA SOMAI, Bachelor of Science (BSc) in Environmental Science - orientation Technology from the Anton de Kom University of Suriname, with 3+ year of experience in project management, in the field of e.g., circular economy, training and environmental monitoring;

SIETZE VAN DIJK, Master of Science (MSc) in Tropical Forest Ecology from the University of Wageningen (NL), specialized in sustainable forest management and certification, and related capacity building and institutional support, with 39+ years of experience worldwide (of which 20+ years in Suriname); and



OUTER LAYER – ADDITIONAL EXPERTS

What follows are descriptions of additional experts that ESS can easily mobilize:

TOURISM SPECIALIST, Master in Leisure, Tourism and Environment from the Wageningen University in The Netherlands, chairman of a foundation for conservation and sustainable tourism, with 30+ years of experience in nature tourism and capacity building in Suriname;

BOTANIST, Doctor in Botany from the Museum National d'Histoire Naturelle in Paris, France, with 15+ years of worldwide experience, including in French Guiana and Suriname, in assessment and conservation of flora, vegetation and biodiversity in general;

ORNITHOLOGIST, Doctor in Biology from the Louisiana State University in the USA, specialized in neotropical birds, with 10+ years of experience in faunal surveys, and impact assessment studies in the Americas, including Suriname and Guyana;

MAMMAL SPECIALIST, Doctor in Biology from the University of Toronto in Canada, specialized in small mammals, with 25+ years of worldwide experience in faunal surveys;

HERPETOLOGIST, Doctor in Biology from the University of Leiden in The Netherlands; specialized in reptiles and amphibians of the Guianas, with 30+ years of experience in surveys, impact assessment studies and field training, mostly in the Guianas;

FISH SPECIALIST, Doctor in Biology from the University of Suriname, specialized in the ecology of the fishes of the Guiana, with 30+ years of experience in surveys and impact assessment studies in the Guianas;

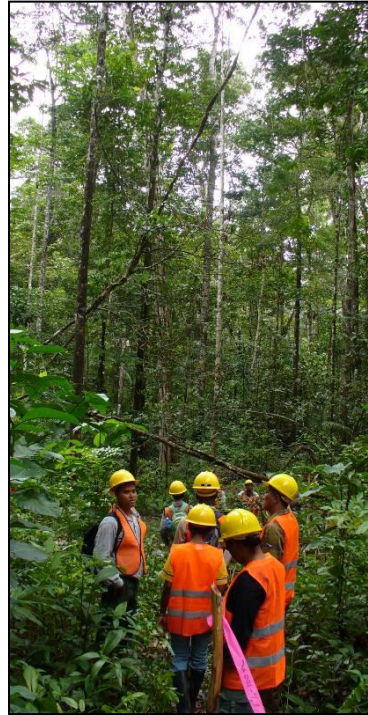
SOCIAL SPECIALISTS, i) Master in Social Geography, independent consultant with 7+ years of experience in stakeholder engagement, social studies, and impact assessment in Suriname, and ii) Master of Science in Biodiversity Conservation and Sustainable Development in the Caribbean, independent consultant with 9+ years of experience in stakeholder engagement / stakeholder consultation, impact assessments and communication for sustainable development, and iii) Master in Social Development & Policy, independent consultant with 15+ years of expertise in stakeholder engagement, social research, capacity building, and awareness initiatives, specializing in HSEQ, waste & pollution management, and sustainable agriculture, and iv) Master's degree and 27+ years of experience in development and social change issues, including women and child rights, gender, participation, climate change and conservation, mostly in Suriname;

ARCHAEOLOGIST, Ph.D. and M.A. in Anthropology with 30+ years of international experience in archaeological surveys, consultancy and fieldwork.

We can mobilize



**an even wider
range of expertise**

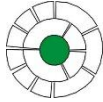


**if the job
requires it**





Feel free to contact us via our Office Manager



Ms. Jessica Ritfeld

Email: officemanagement@ess-environment.com

Phone: (597) 8559282

P.O. Box 2240 Paramaribo, Suriname

Website: www.ess-environment.com

Visit our Facebook and LinkedIn pages by clicking on the icons below





Our track record (a sample)

ESS has been assigned the jobs listed below, either as lead or as subcontractor within the framework of a larger commission. What is listed below is a sample of mostly recent and ongoing jobs we (ESS) have implemented; the complete list can be found on our website.

ASSIGNMENT	PERIOD	CLIENT
Sustainable Forest Management and Certification		
➤ Support the FSC Continuous Improvement Procedure program within Bigi Poika Akarani and prepare for FSC-Chain of Custody certification for local wood processing	2026-ongoing	World Wildlife Fund, Inc. (WWF)
➤ Study of opportunities to use leftover sawn timber as a valuable raw material in Suriname (SUSTAME IV)	2025-2026	IDB Lab
➤ Support the creation of community forest enterprises and (inter)national trade of sustainably sourced timber from FSC certified community forests in Suriname (SUSTAME III)	2024 - 2025	Stichting ProBos (The Netherlands)
➤ Cities4Forest (C4F) initiative: facilitate a partnership as to timber production and end-use between the Bigi Poika community (Suriname) and the City of Amsterdam	2023 - 2024	Stichting ProBos (The Netherlands)
➤ Tropical Timber Trade Portal - Update of the Suriname Country Profile & writing of a news item "Improved production control in Suriname"	2020	FORM International (The Netherlands)
Baseline, Environmental Impact, and Monitoring Studies		
➤ Establish Quality Hectares Benchmark plots in undisturbed forest adjacent to the Biodiversity Offset & Concurrent Reclamation areas.	2026-ongoing	Newmont Suriname, LLC
➤ Monitoring of Gold dressing agent (GDA) use at N.V. Goudkust (a private gold mining operation in Suriname)	2026	Suriname Environmental Authority (NMA)
➤ Vegetation Disturbance surveys, focused on plant species of conservation concern in areas to be cleared in the context of mining operations at Merian gold mine	2025	Newmont Suriname, LLC
➤ Community Forest Assessment: Provide a comprehensive and objective assessment of valuable forest resources within the TSF2 area, based on a thorough understanding of the existing ecological and socio-economic value of biodiversity	2025	Newmont Suriname, LLC
➤ Assessment of potential impacts of flaring on birds at Staatsolie Saramacca concession	2023 - 2024	Staatsolie (Suriname state oil company)
➤ Biodiversity Offset Monitoring Merian gold mine (vegetation)	2023 - 2024	Newmont Suriname, LLC
➤ ESIA Gap Analysis for TSF2 tailing facility Merian gold mine	2022 - 2023	Newmont Suriname, LLC
➤ ESIA Digicel Suriname Submarine Fiber Cable Project (Paramaribo, Suriname)	2022 - 2023	Digicel Suriname / Digicel Group
➤ Ecological Baseline Studies TSF3 tailing facility Rosebel gold mine (Suriname)	2022	Rosebel Gold Mines N.V. (RGM)



ASSIGNMENT	PERIOD	CLIENT
Valuation of Intangible Resources		
➤ Climate-Smart Forestry, Suriname Forest Carbon Project Development (initial project and follow-up)	2022 - 2024	CI-Suriname / Face Forests B.V. (Face the Future)
➤ Facilitation of webinar 'Online presentation on Experience Sharing on Free, Prior and Informed Consent (FPIC)'	2021	REDD+ Project Management Unit
➤ Case study of the traditional uses of fires by Indigenous People in Suriname, specifically in relation to surrounding ecosystems.	2020	Advisory Bureau on Human Rights and Sustainable Development for UNESCO
➤ Assessment of Business Baseline and Exploration of Business Options for Galibi Nature Reserve and Brownsberg Nature Park (Suriname)	2015	World Wildlife Fund Guianas (WWF Guianas)
➤ Development of a Business plan for the Central Suriname Nature Reserve (CSNR)	2010	Ministry of Physical Planning, Land and Forest Management (RGB)
Training, Extension and Publication		
➤ ESIA Awareness training	2025 and 2026	ESS (our own initiative)
➤ Wildlife Monitoring and Amphibian Relocation training	2024	Newmont Suriname, LLC
➤ Social Management Plan execution support, training of project personnel in context of bridge construction Van 't Hogerhuysstraat	2024	Kuldipsingh Infra N.V.
➤ Institutional Capacity Strengthening as to environmental management in the context of artisanal gold mining in Suriname	2023 - 2024	National Institute for Environment and Development in Suriname (NIMOS)
➤ Newmont Suriname water quality monitoring training	2023 - 2024	Newmont Suriname, LLC
➤ Development of a participatory water quality monitoring program and training of Kwakoebron community members (Suriname)	2021 - 2022	Rosebel Gold Mines NV (RGM)



Environmental Services & Support N.V. ~ Company Profile

Assignment	Period	Client
Project Management, Fundraising and Recruitment		
➤ Management of the National GEF PPG Team and technical support for the preparation of UNDP / GEF project “Global Opportunities for Long-term Development of ASGM Sector Plus” – GEF GOLD + in Suriname	2020 - 2022	United Nations Development Program (UNDP)
➤ Management of project 'Encouraging children's homes to grow crops and fish for food security and climate change resilience'	2017 - 2019	United Nations Development Program (UNDP)
➤ Project writing for a UNDP Japan-Caribbean Climate Change Partnership (J-CCCP) project, for and with the Ministry of Agriculture, Animal Husbandry, and Fisheries in Suriname	2016 - 2017	United Nations Development Program (UNDP)
➤ Evaluation of Three Finalized SGP projects (Suriname)	2015 - 2016	UNDP Small Grants Programme (SGP)
➤ Monitoring and Reporting on a Charcoal Making Furnace to Find a Means for Converting Wood Waste into High Quality Charcoal (Suriname)	2015 - 2016	Charbon Engineering N.V. (The Netherlands)
Plan, Policy and Project Development		
➤ METT (management effectiveness) Assessment for the Bigi Pan, North Coronie and Commewijne – Marowijne MUMAs (multiple-use protected areas in Suriname)	2025 - 2026	United Nations Development Programme (UNDP)
➤ Support progress review of the Comprehensive Disaster Risk Management Program (CDRMP) of Suriname	2023 - 2024	Inter-American Development Bank (IDB)
➤ Support as to updating the National Biodiversity Strategy and Action Plan Suriname	2023	Spiral Consultancy / Ministry of Spatial Planning & Environment
➤ Consulting services for the Implementation of Global Climate Fund (GCF) Readiness Project Activities in Suriname	2022 - 2023	Frankfurt School / Caribbean Development Bank (CDB)



Assignment	Period	Client
In the Social domain		
➤ Socio-economic study at Galibi community as part of the Marine Turtle Programme in Suriname	2022	World Wildlife Fund, Inc. (WWF)
➤ Archeology / Tangible Heritage Baseline Study TSF3 tailing facility Rosebel gold mine (Suriname)	2022 - 2023	Rosebel Gold Mines N.V. (RGM)
➤ ESIA Digicel Suriname Submarine Fiber Cable Project (Paramaribo, Suriname), part	2022 - 2023	Digicel Suriname / Digicel Group
➤ ESIA Telesur Submarine Fiber Cable Project, part (Suriname)	2021 - 2022	United Caribbean Contractors / Telesur
➤ ESIA Digicel Submarine Fiber Cabel Project, part (Suriname)	2021 - 2022	Digicel Suriname / Digicel Group